







I-69 Presentation


Presented by: John Barton, P.E., Assistant Executive Director for Engineering Operations

November 18, 2010

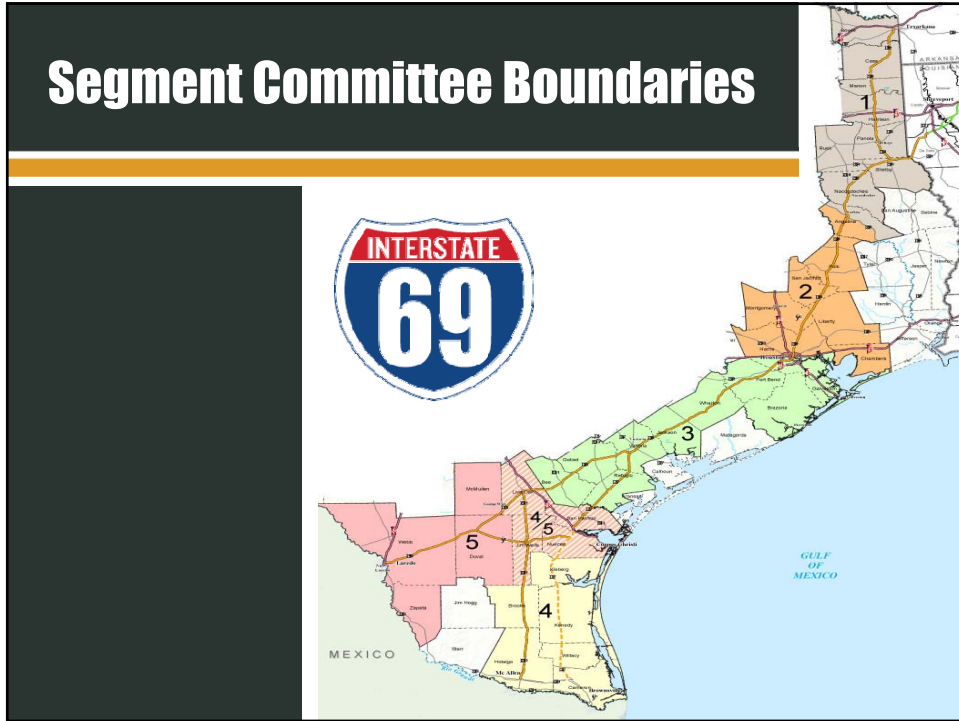


I-69 Moving People and Goods



-  **Connects border crossings**
-  **Connects inland and sea ports**
-  **Important route for timber industry**
-  **Vital hurricane evacuation route**



Segment Committee Boundaries



Current Transportation Challenges

-  **Safety and congestion**
-  **Accommodating new growth**
-  **Being competitive for new development**



Current Transportation Challenges (cont'd)

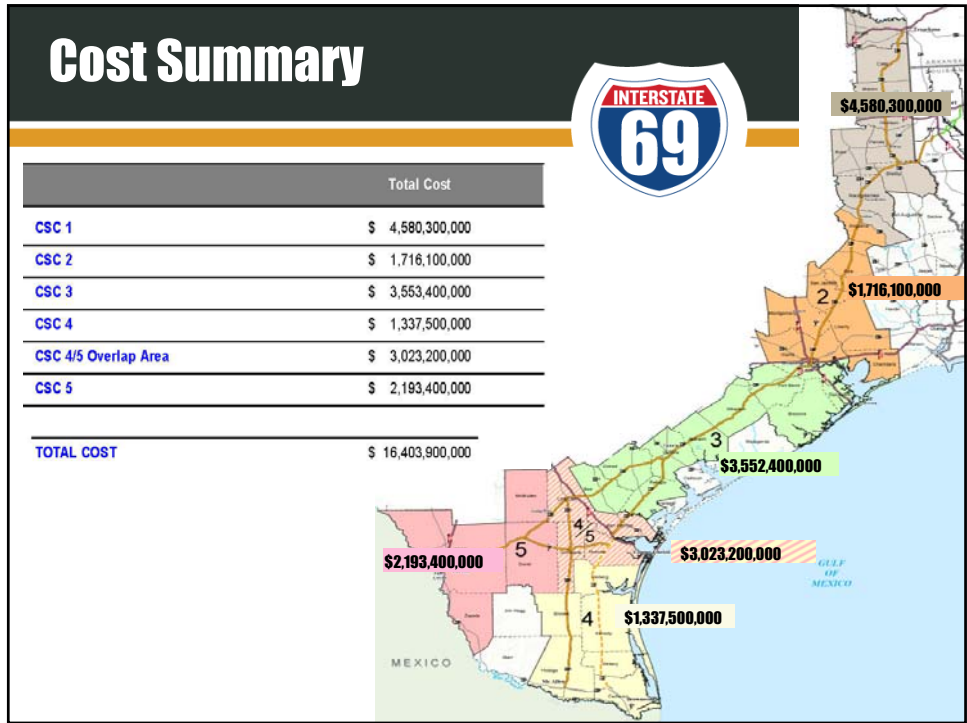
- **Adequate crossings for farmers and ranchers**
- **At-grade rail crossings**
- **Drainage and elevation of roads, especially during hurricane evacuations**



I-69 Segment Committee Activities

- **Identify roads that:**
 - **Serve as I-69**
 - **Connect to I-69**
 - **Provide improved access to I-69**
- **Identify environmental planning features**
- **Identify roadway improvements**





I-69 Segment Committee

- Segment One – Jerry Sparks, Texarkana**
- Segment Two – Jim Wehmeier, Lufkin/Angelina County Economic Development Corp.**
- Segment Three – Mayor Domingo Montalvo, Wharton**
- Segment Four – Joe Phillips, Hidalgo County**
- Segment Five – Judge Terry Simpson, San Patricio County**

Current Controlled Access Areas



U.S. 59

Texarkana, Carthage, Nacogdoches, Lufkin, Wharton, El Campo, Edna. Montgomery, Harris and Fort Bend counties to Rosenberg



U.S. 77

Victoria, Refugio, Sinton, Robstown, Kingsville. Harlingen to Brownsville



U.S. 281

Alice, Edinburg and Mc Allen



Current and Future Construction



U.S. 59

San Jacinto, Montgomery, Fort Bend, Cass, Angelina counties



U.S. 77

San Patricio and Willacy counties



U.S. 281

Brooks and Jim Wells counties



Next Steps

- **Advisory Committee meets in December to study existing facilities**
- **Segment Committees compile preliminary plans**
- **Segment Committees receive public input on preliminary plans**

